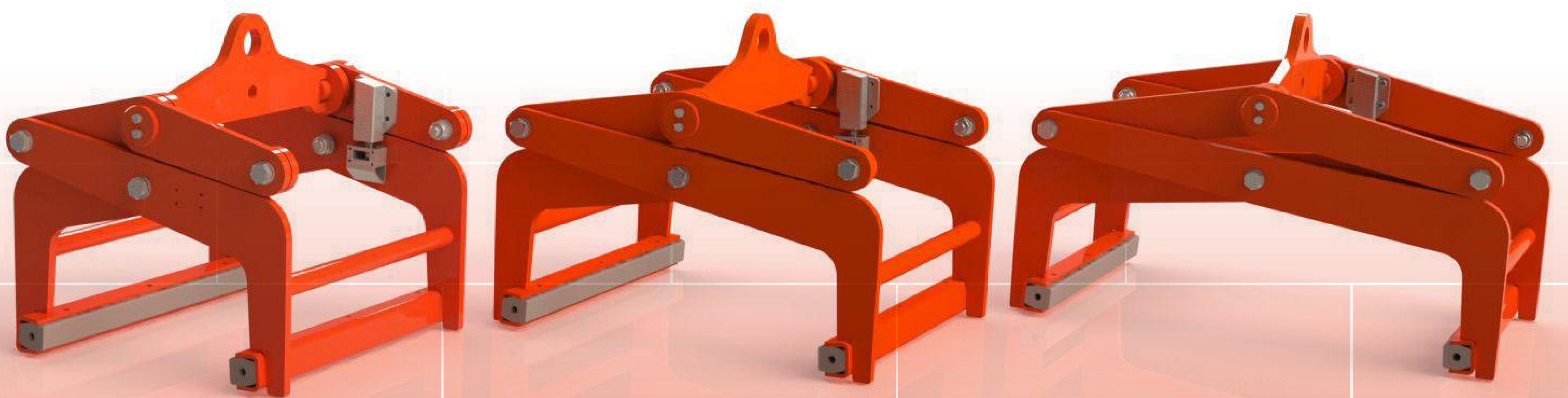


3A Block

Operation Instructions



**CONCRETE
BLOCK SHAPE
CLAMP**

MODEL

CL40

CL60

CL80



W.L.L.

2000kg

2500kg

3750kg

CLAMP WEIGHT

~135kg

~155kg

~200kg

CLAMP OPENING

450mm

650mm

850mm

OWNER

www.3ABLOCK.com

made in EU

Produced by: 3A Block
2400, Garlyanitsa 43
Radomir, Bulgaria
office@3ablock.com
www.3ablock.com
+359 885 150 554

Preface

These operating instructions are meant for the Concrete Block Shape Clamp, constructed and delivered by 3A Block®. Because this Concrete Block Shape Clamp needs to comply **with the directive "2006/42/EC", 3A BLOCK has formulated an EU Agreement Declaration.**

In these operation instructions you will find every kind of information you need to be able to work safely and correctly with the Concrete Block Shape Clamp. Utilising this Concrete Block Shape Clamp involves risks. Inappropriate use could be highly dangerous, to you or to bystanders. Before working with the Concrete Block Shape Clamp, please read carefully this Manual. In particular the Safety Instructions are important for your own and other's safety.

The Concrete Block Shape Clamp must be altered or adapted, the regulations and/or requirements of the appropriate directive always need to be applied. Alterations or adaptations to the Concrete Block Shape Clamp are at the risk of the one handling these.



Attention! A comment with additional information; may point out particular attention or regulations, for the sake of safety



Danger! This comment points out any risks of working with the Concrete Block Shape Clamp

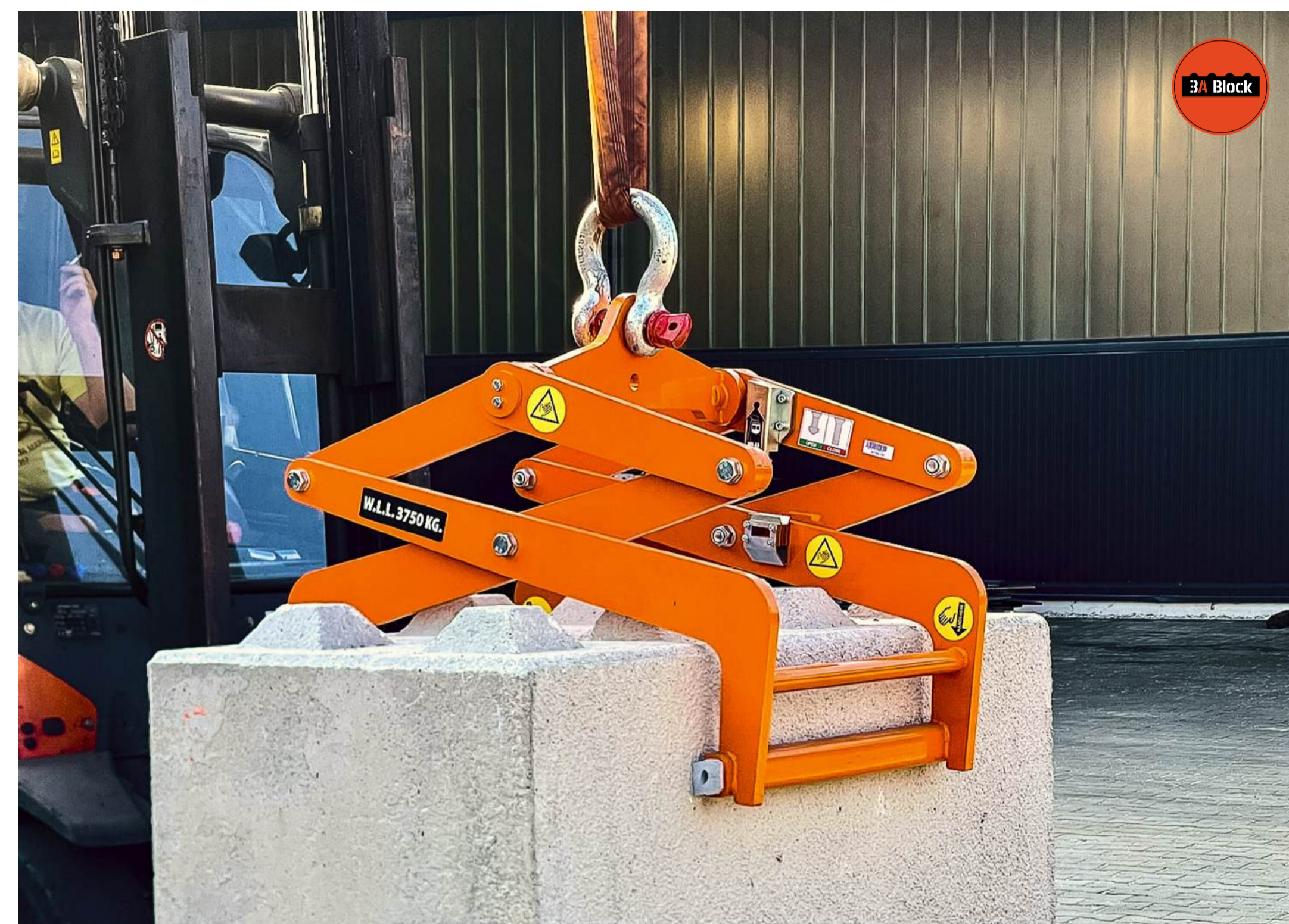
Rights of ownership

All rights are specifically reserved. Multiplication, adaptation and/or translation without 3A Block's prior permission in writing is prohibited, except as is permitted by copyright.

1. DEFINITIONS OF THE CONCRETE BLOCK CLAMP

With the help of the Concrete Block Shape Clamp (ID xxxx), rectangular concrete blocks with a maximum weight of 3750 kg can be lifted with CL80 model, 2500kg with CL60 model and 2000kg for CL40

With the use of a Lifting Beam device (ID xxxx), this Concrete Block Shape Clamp can be attached to a forklift truck. Furthermore, the Concrete Block Clamp can be attached to the hook of a hoisting crane. The hoisting device can be linked up to the Concrete Block Shape Clamp with the use of a pin & bearing ring connection, as well as with a hook & chain connection (see Figures 1 & 2 below).



The Concrete Block Shape Clamp is composed of two opposing arms (1) assembled in a scissor configuration ensuring a strong grip. At the ends of the arms there are rubbers (2) ensuring the concrete block is not damaged and in the same time necessary traction for safe lifting is applied. With the help of a mechanical Locking Mechanism (4) on the shoulders (3), the clamp can remain open without operator direct intervention. This allows the clamp to release the block.



Clamp



Rubber



Locking Mechanism

Technical Details

Model:	CL40	CL60	CL80
Clamp Opening:	450mm	650mm	850mm
Weight:	140kg	170kg	195kg
Lifting Capacity:	2000kg	2500kg	3750kg
Width:	760mm	760mm	760mm

2. DIRECTIONS FOR USE

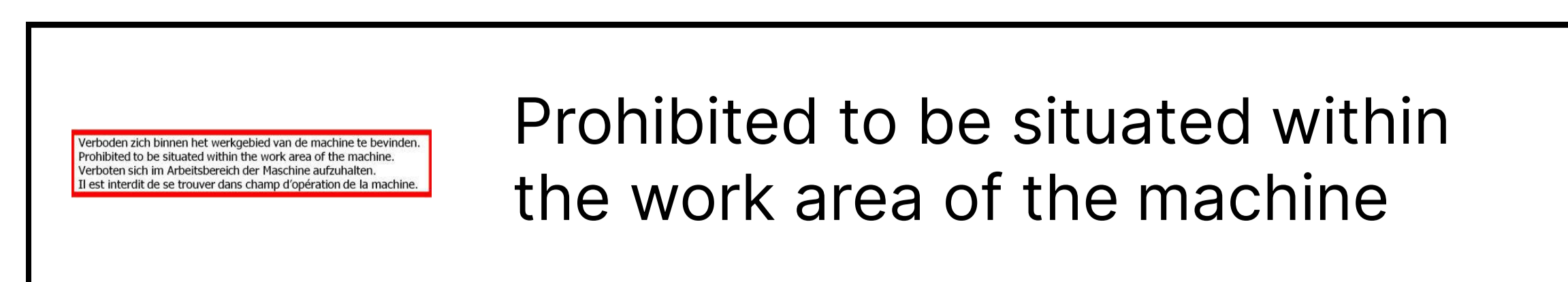
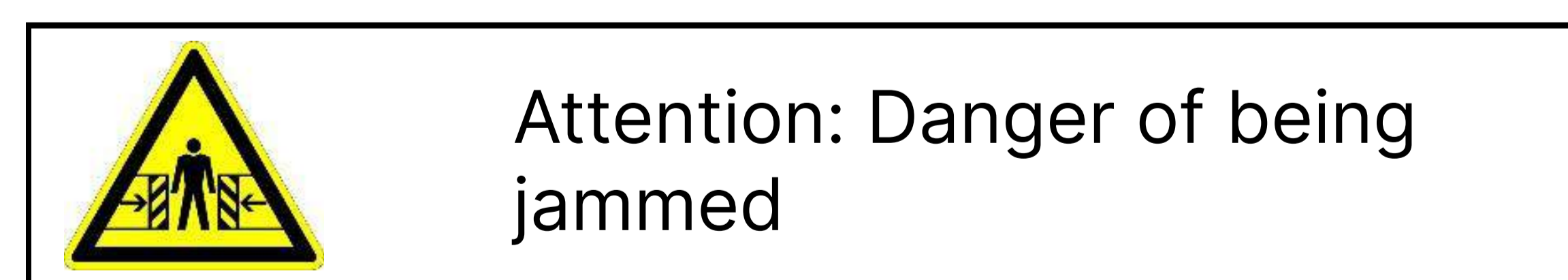
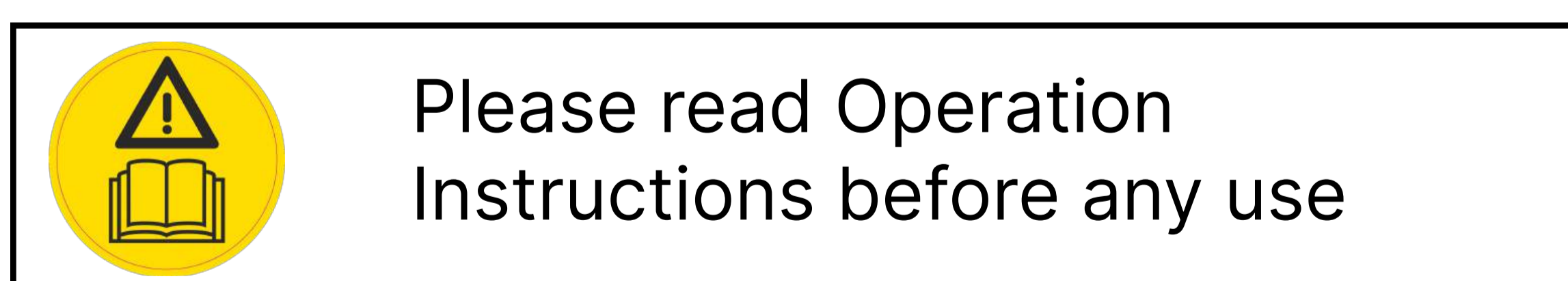
The Concrete Block Shape Clamp is meant for the sole purpose of lifting, shifting and stacking up of concrete blocks. It is prohibited to utilise the Concrete Block Shape Clamp for other purposes. Any other use than outlined by 3A BLOCK® could cause danger to the operator or bystanders. If someone utilise the Concrete Block Clamp for any other application, the EU Declaration of Agreement, formulated by 3A BLOCK®, will be nullified, and the Concrete Block Shape Clamp, once more, needs to be brought into conformity with the applicable European Directives.

3. SAFETY

In this Chapter, the safety measures and instructions are described, in order to work safely with the Concrete Block Shape Clamp.

EXPLANATION PICTOGRAPHS

On the Concrete Block Clamp, the following icons are applied:



3A Block



The Concrete Block Clamp is only allowed to be operated by competent persons. The engine drivers need to be sufficiently informed about possible dangers, and they need to have read the operating instructions.



The age of the operator of the hoisting engine needs to comply with the legally implemented minimum.



Please notice that the noise level of the linked machinery never exceeds 80dB, causing workers to possibly wear hearing protection.



Never put your hands in shifting or moving parts.



While connecting the Concrete Block Clamp, please follow the instructions mentioned in Chapter 4.

3A Block



During maintenance or cleaning duties, please lower the Concrete Block Clamp to the ground first, switch off the engine and remove the ignition key.



Never connect or manoeuvre if someone still is between the machinery and the Concrete Block Clamp.



Hanging, lifting and riding along of individuals at or on the Concrete Block Clamp is strictly forbidden.



Never position yourself underneath a lifted load or operate over people.






The Concrete Block Shape Clamp has been tested and approved by an independent authority. This testing needs to be repeated annually.



Be careful with wet, frozen, iced and dirty blocks! There is a danger of slipping the clamped block

TYPE PLATE AND INSPECTION STICKER

   	MODEL	CL40
		
	W.L.L.	2000kg
	CLAMP WEIGHT	~135kg
	CLAMP OPENING	450mm
www.3ABLOCK.com		made in EU

Model indication Concrete Block Shape Clamp

Serial Number

Working Load Limit

Weight of the Concrete Block Shape Clamp

Maximum size of concrete blocks

   	MODEL	CL60
		
	W.L.L.	2500kg
	CLAMP WEIGHT	~155kg
	CLAMP OPENING	650mm
www.3ABLOCK.com		made in EU

   	MODEL	CL80
		
	W.L.L.	3750kg
	CLAMP WEIGHT	~200kg
	CLAMP OPENING	850mm
www.3ABLOCK.com		made in EU

JAN	FEB	MAR	APR	MAY	JUN
2024		3A Block		2025	
JUL	AUG	SEP	OCT	NOV	DEC

Inspection sticker

4. OPERATION

The Concrete Block Clamp is being operated from the cabin of a fork-lift truck or crane.

WORKING ORDER / OPERATION ORDER

While working with the Concrete Block Shape Clamp, the working order below needs to be followed:

- Please check if the Concrete Block Shape Clamp has been properly secured to the lifting device and the fork-lift truck or crane;
- Move the Concrete Block Shape Clamp towards the concrete blocks;
- Lower the clamp over the concrete block (fig 1);
- Lower the clamp a little more, until the locking mechanism is released (fig 2);
- Lift the clamp. The scissors construction of the clamp mechanism firmly holds the block while lifting (fig 3);
- Drive with the concrete block towards the desired place;
- Stack the block by lowering it in the right place on the ground or on other blocks;
- Lower the clamp until the safety mechanism locks (fig 4);
- Lift the clamp;
- Continue the work.



fig. 1

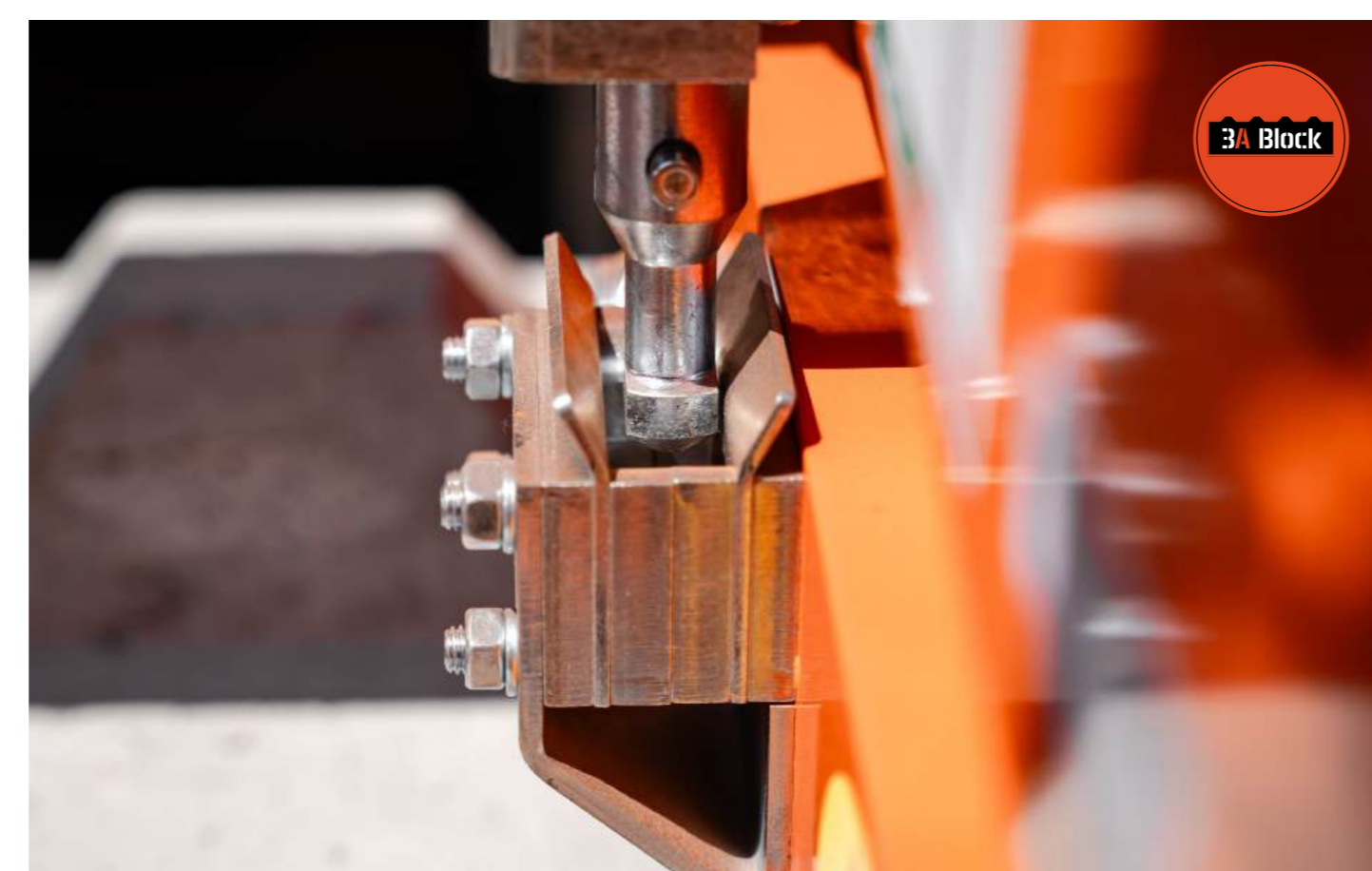


fig. 2



fig. 3

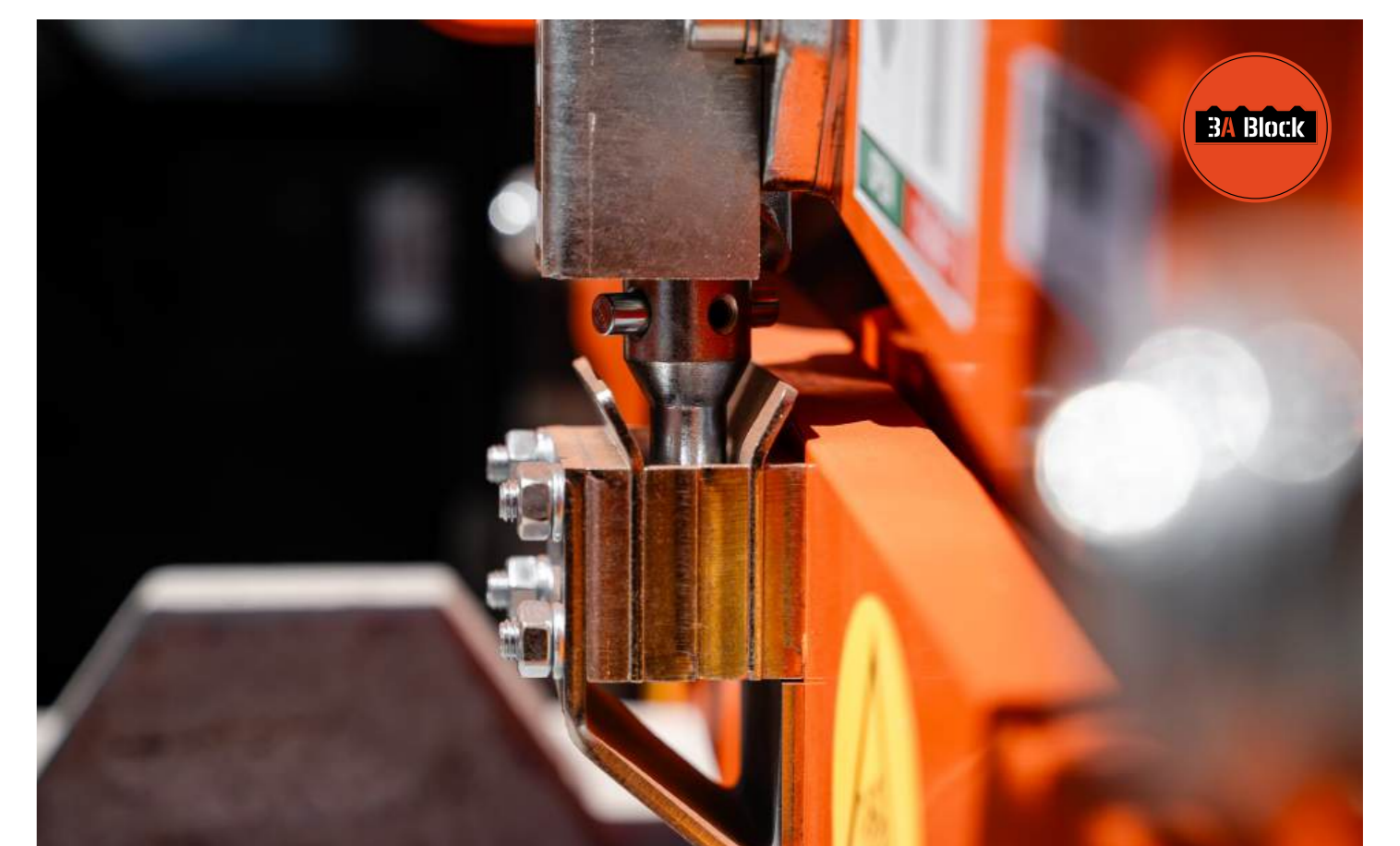


fig. 4

Always drive slowly when moving a clamped concrete block! Always avoid high speeds, to prevent the clamp from swinging and as a result lose the concrete block.

Make sure that while moving the fork-lift truck including a loaded Concrete Block Shape Clamp, connected by means of a pin & bearing ring, the Clamp should not exceed a 5° angle of deflection to the left or right, a greater deflection increases the risk of tipping over.

Connecting Concrete Block Shape Clamp to Lifting beam

Please keep to the schedule below, while connecting the Concrete Block Shape Clamp to Fork-lift truck:

- Put the locking pin of the lifting beam or use chain through the holes to secure beam on the forklift; (Fig. 5)
- Move the fork-lift including the lifting beam to the Concrete Block Shape Clamp;
- Lower the lifting beam just above the Clamp; (Fig. 6)
- Place the bearing ring into the eye of the Concrete Block Shape Clamp; (Fig. 7)
- Put the 50mm pin through the hole of the lifting beam and the bearing ring in the Clamp; (Fig. 8)
- Install the locking pin (Fig. 9)

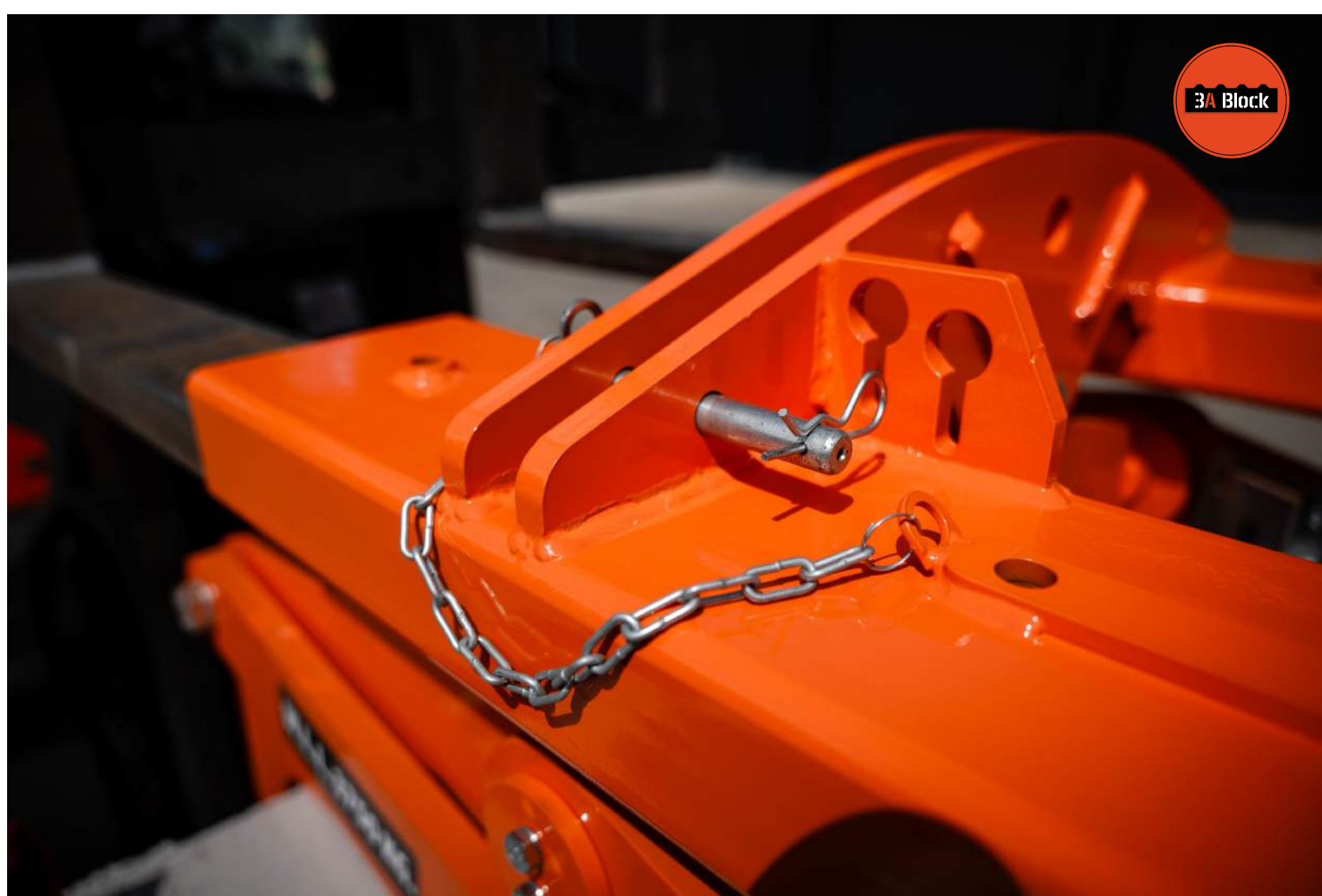


Fig. 5

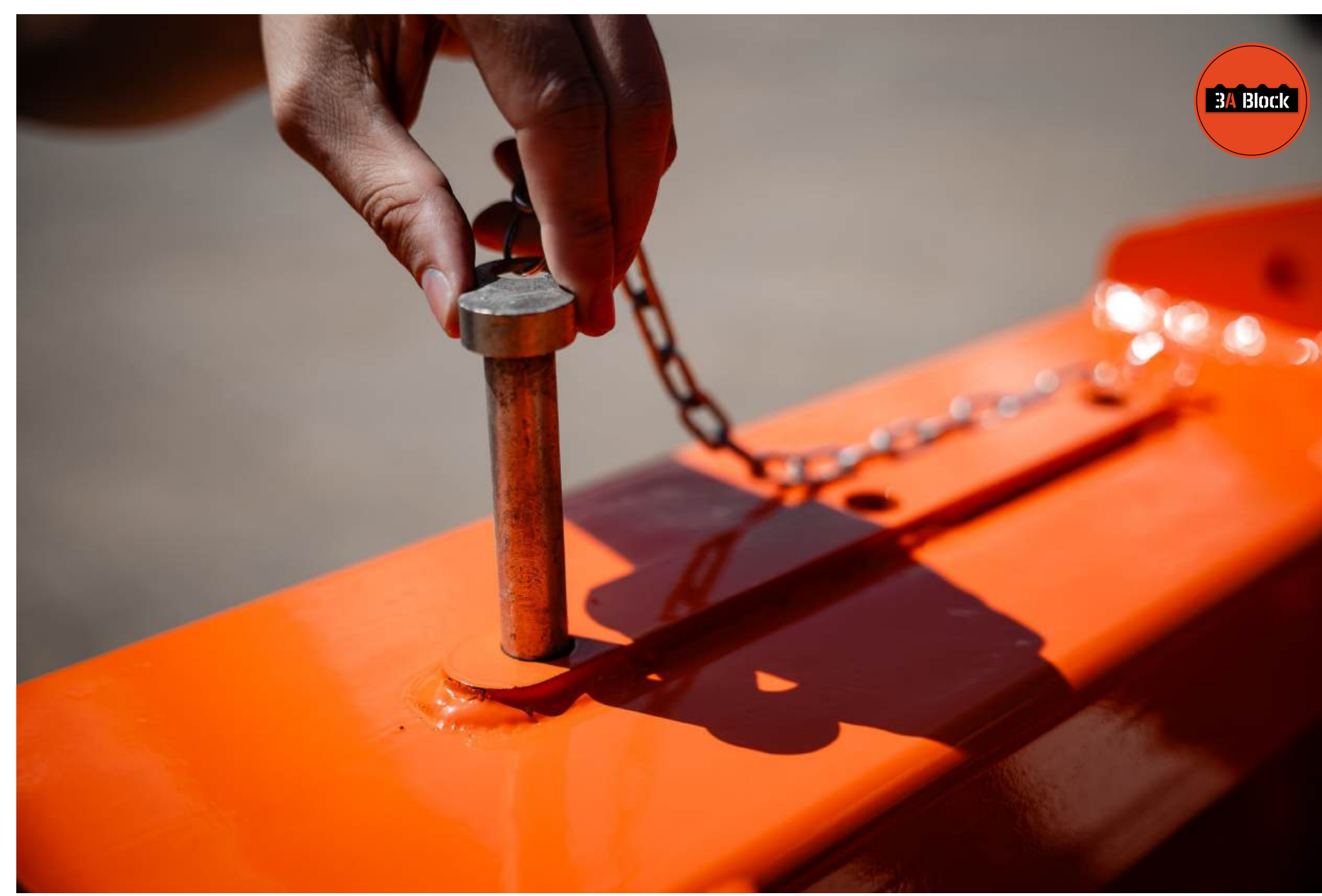


Fig. 5.1



Fig. 5.2

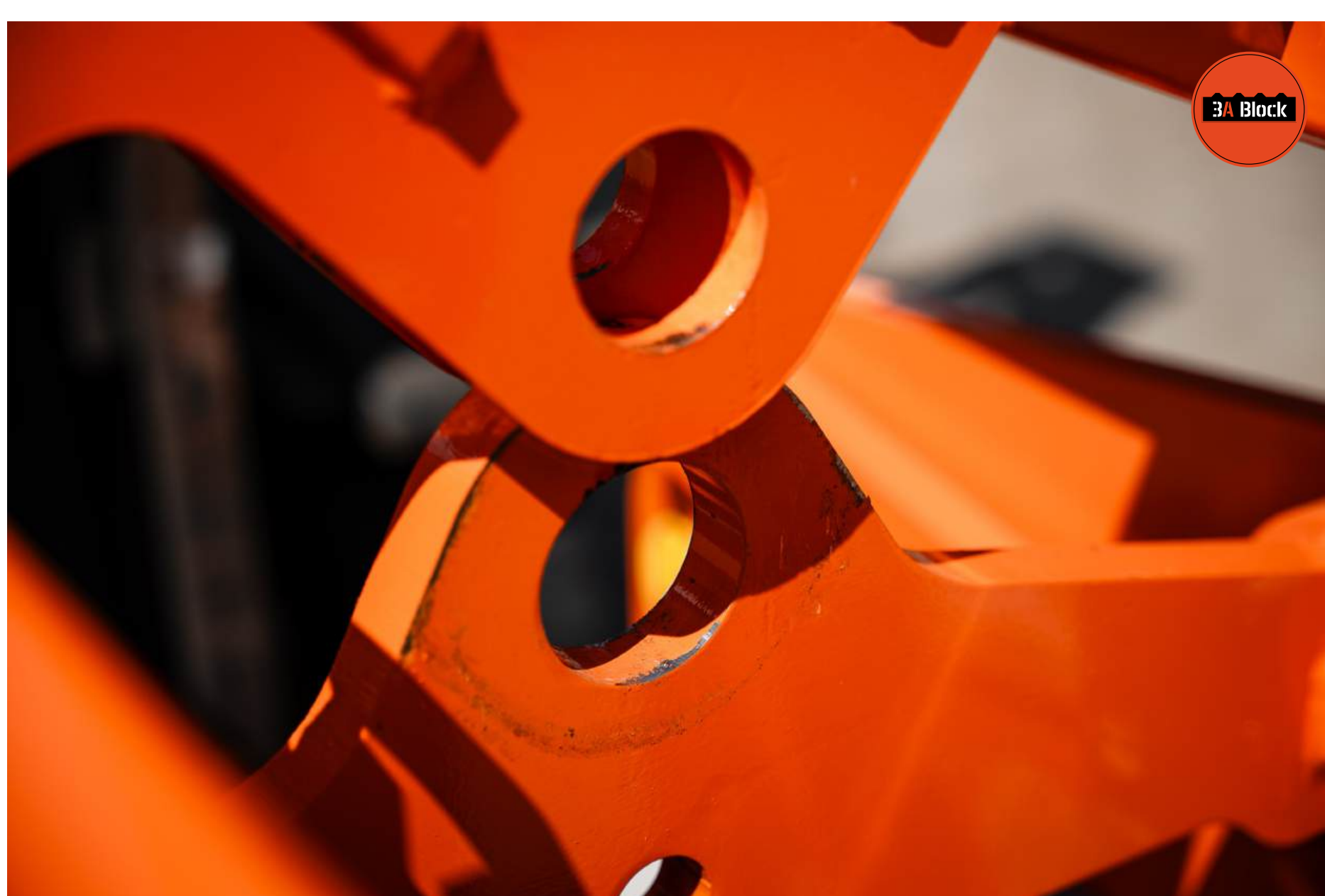


Fig. 6

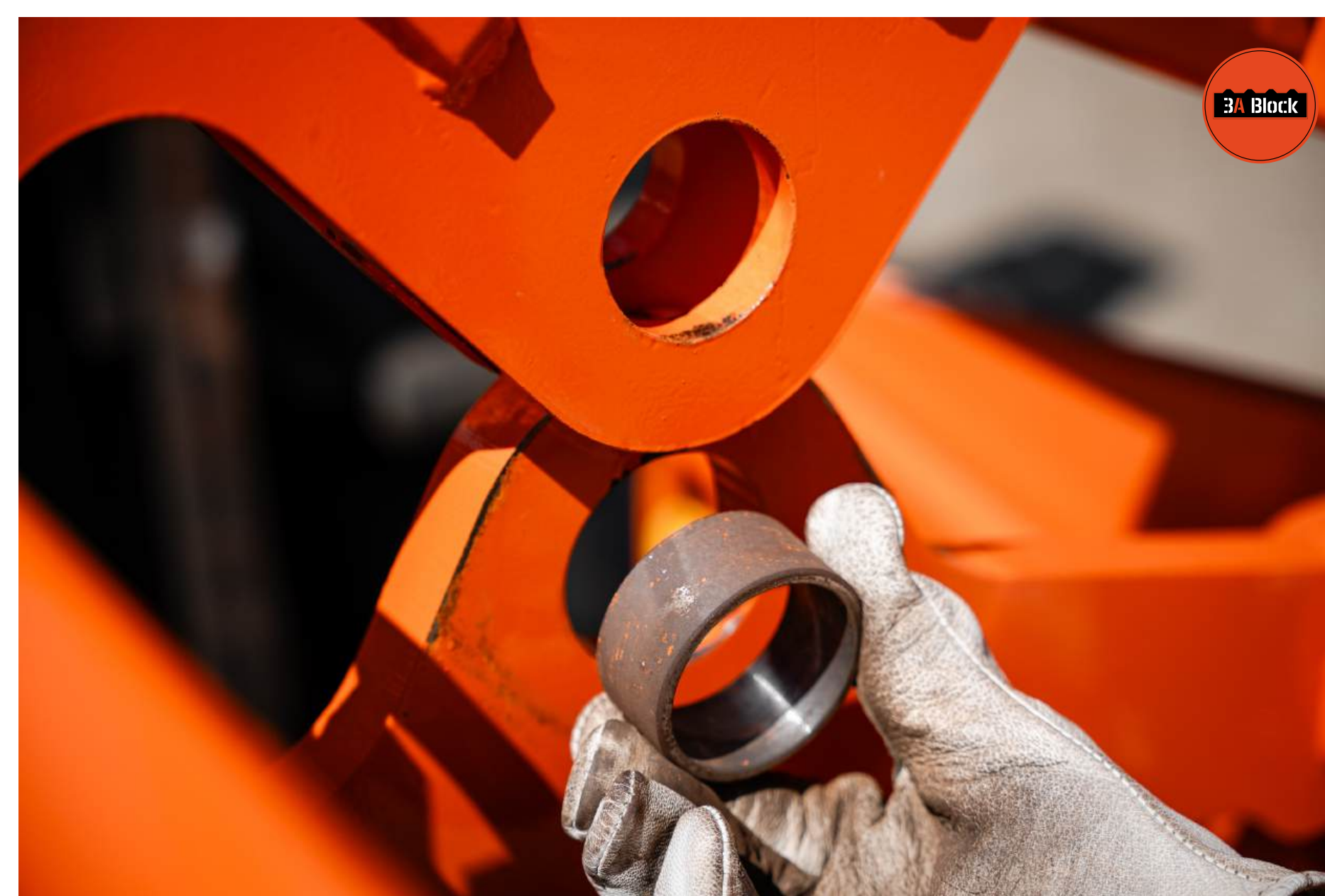


Fig. 7

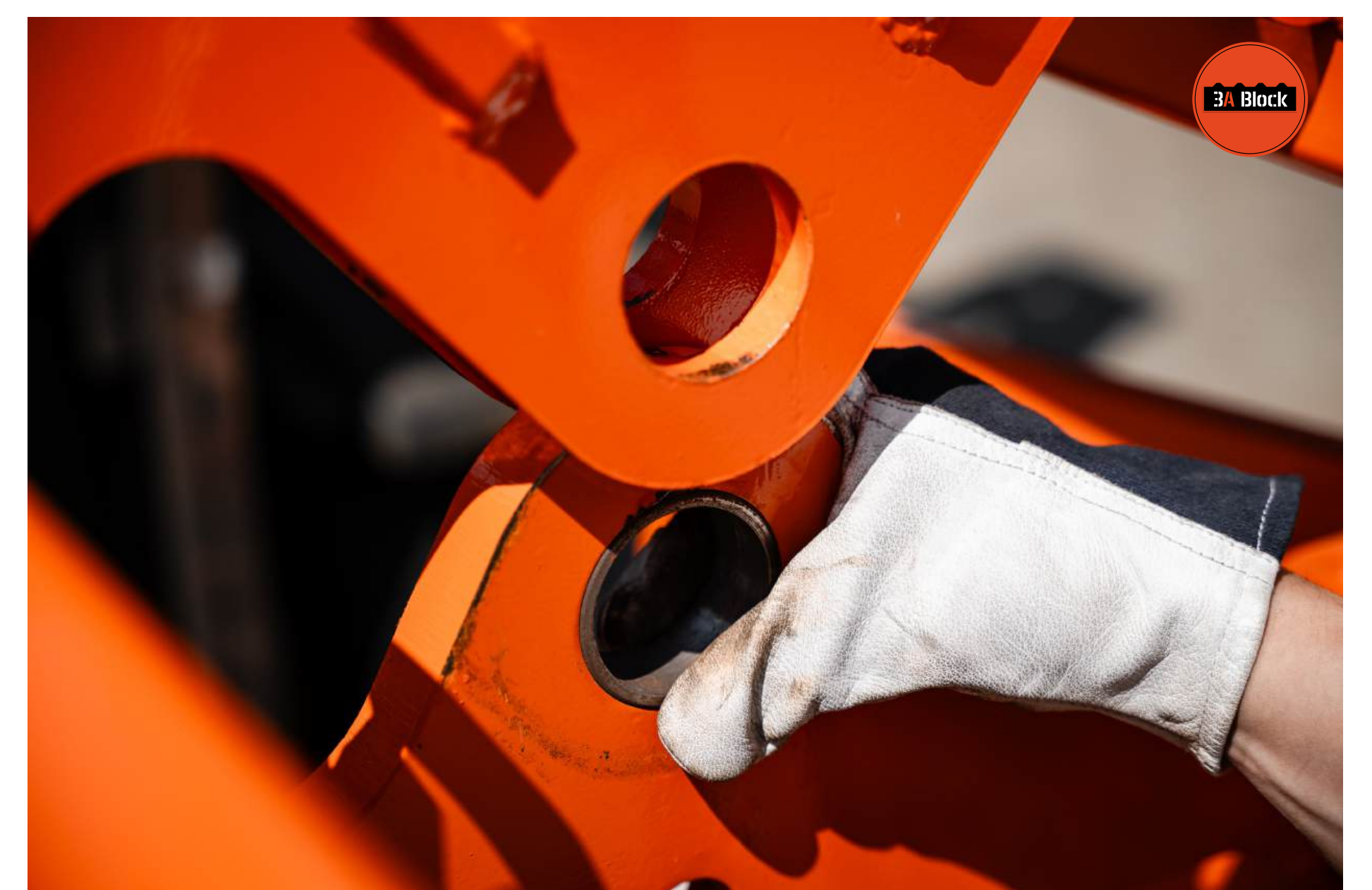


Fig. 7.1

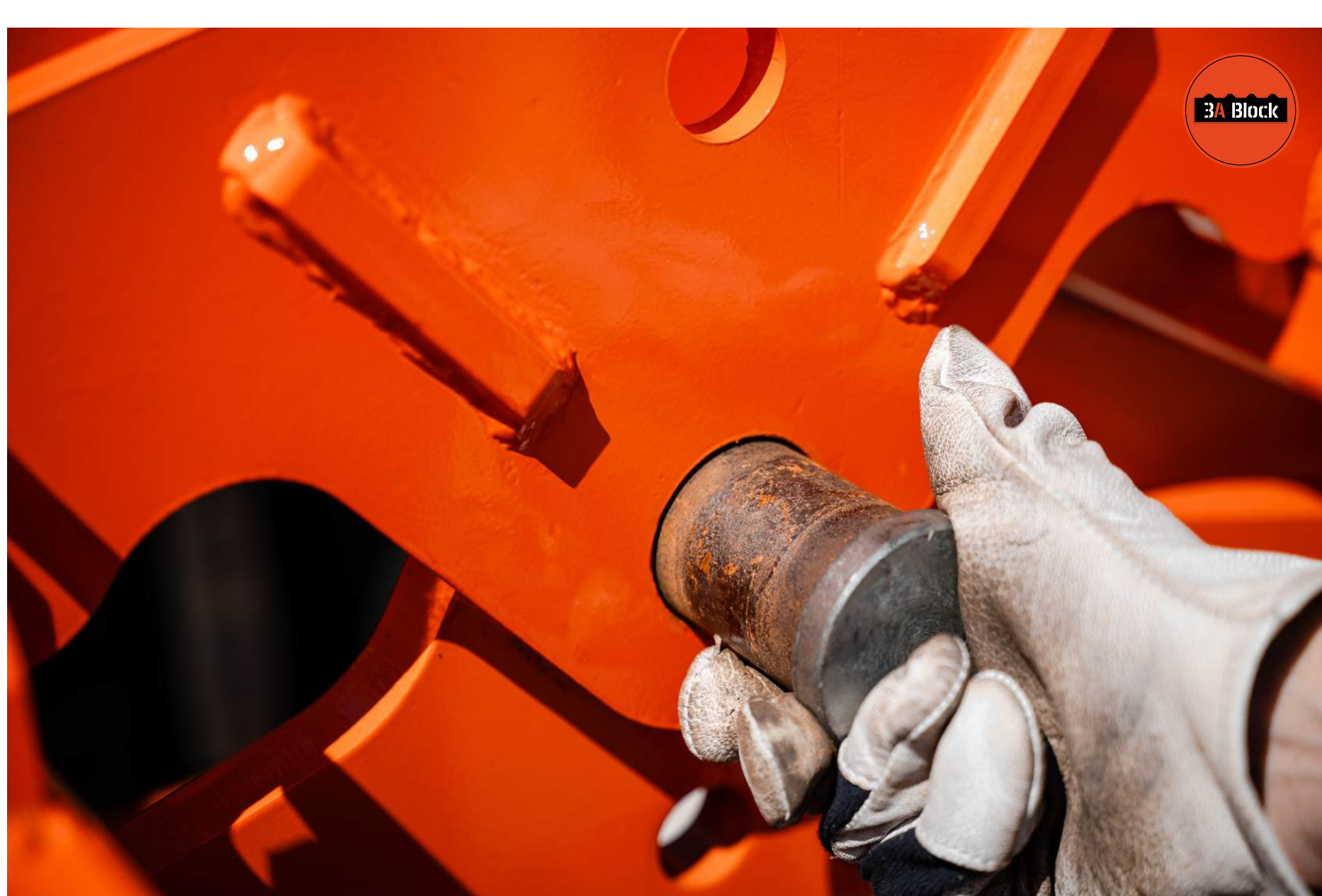


Fig. 8

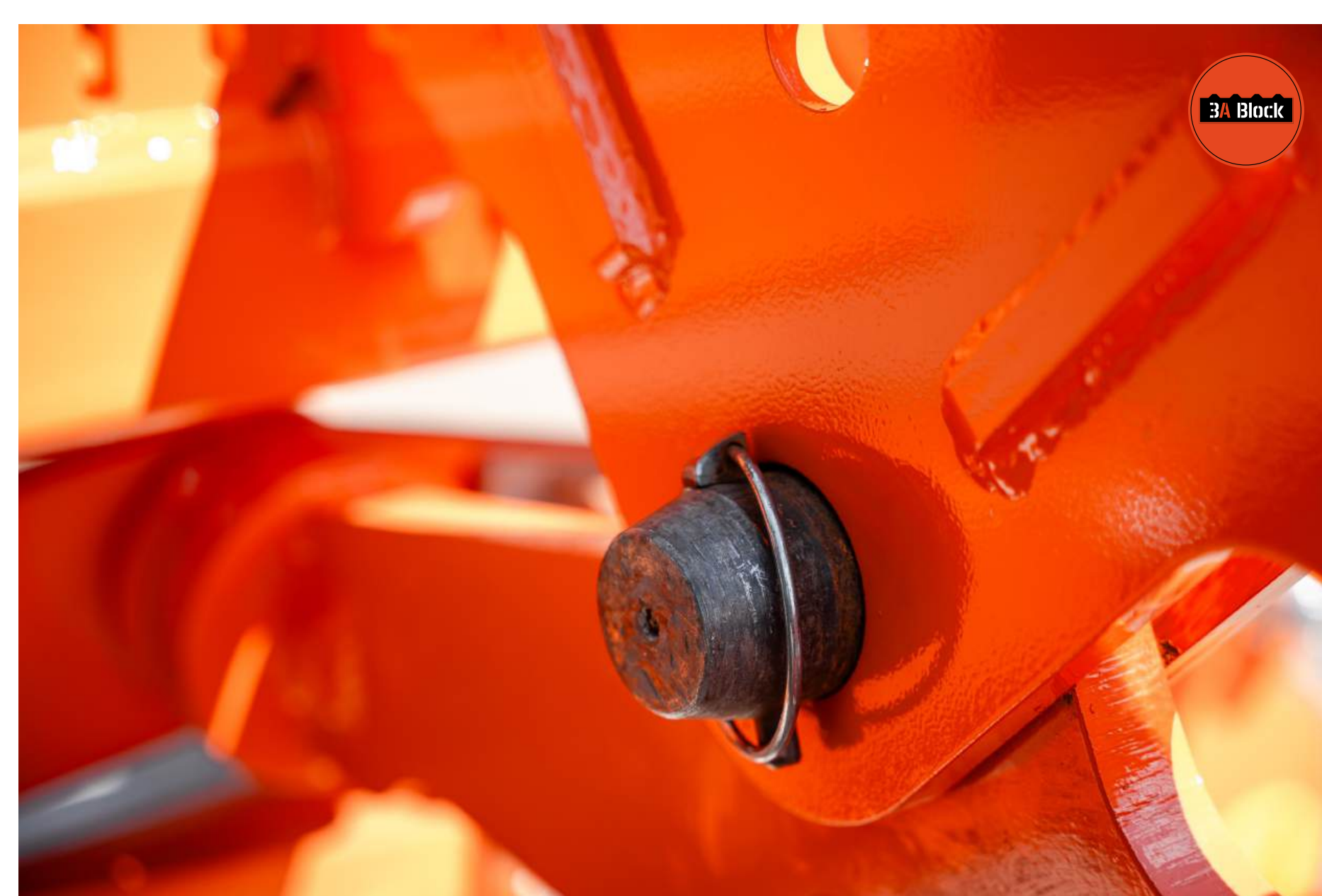


Fig. 9

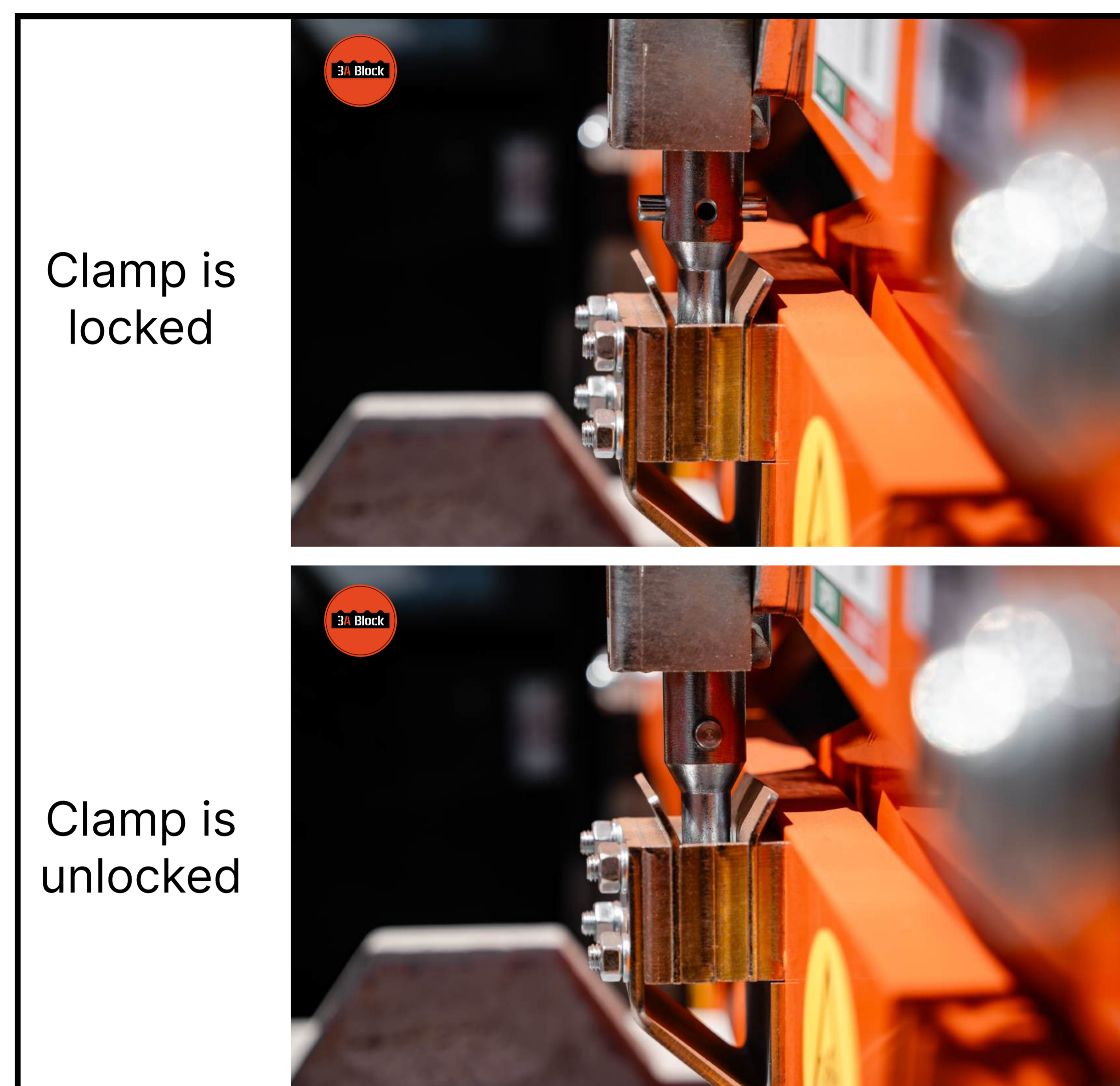


Never mount if somebody is located between the machine and the Concrete Block Shape Clamp. Please warn these individuals by using an audial signal.

Connecting Concrete Block Shape Clamp to Crane

Please keep to the schedule below, while connecting the Concrete Block Shape Clamp to crane:

- Lower the hook of the crane just above the Concrete Block Shape Clamp;
- Couple up the hook to the Concrete Block Shape Clamp;
- Lift the whole Clamp unit upwards if the locking mechanism is not locked lower the clamp and lift it again.
- Now the Concrete Block Clamp is ready for work.



Before work with Concrete Block Shape Clamp , the following needs to be checked:

- Please check if all bolts, nuts and pins are fixed properly;
- Please check if the locking pin (if applicable) is solidly in place;
- Please check the rubber surface reliefs in the clamps for defects. Replace them if they are damaged;
- Please check general technical state;
- Please test if the locking mechanism of the Concrete Block Shape Clamp works properly and have enough lubricant;

Never allow any persons to be within the range of the machine, while working with the Concrete Block Shape Clamp. If needed, warn people beforehand!

DETACHING

Fork-lift:

- Drive the Concrete Block Shape Clamp to the preferred location;
- Lower the Concrete Block Shape Clamp onto level surface;
- Turn off the engine;
- Disconnect the lifting device;
- Lift the lifting beam device;
- Drive the truck with lifting beam device backwards.

Crane:

- Move the Concrete Block Shape Clamp to the preferred location;
- Lower the Concrete Block Shape Clamp onto level surface;
- Disconnect the hook;
- Lift the hook.

5. MAINTENANCE

GENERAL

When replacements are needed, use only original parts at all times. Therefore, please contact the manufacturer, 3A Block.

Maintenance should only be performed by qualified mechanics only.

During maintenance or cleaning duties, please lower the Concrete Block Shape Clamp to the ground first, switch off the engine and remove the ignition key.

LUBRICATION

The indicated lubrication points of the Concrete Block Shape Clamp must be lubricated daily . The pin, bush and locking mechanism need to be greased on a daily basis



CLEANING & STORAGE

The Concrete Block Shape Clamp regularly needs to be cleaned properly. Caked or concrete residue will affect a proper functioning of the Concrete Block Shape Clamp. During normal maintenance, the Clamp needs to be dry-cleaned.

Make sure to stick to the maintenance points list below. These will contribute to the longevity of your Concrete Block Shape Clamp:

- Before cleaning the Concrete Block Shape Clamp, cover the stickers, and do not directly target these with the jet;
- Clean the Concrete Block Shape Clamp using a high-pressure washer; prevent damaging the finish by keeping sufficient distance (> 0,75 m).
- After cleaning blow-dry and lubricate the Concrete Block Shape Clamp thoroughly, and grease all moving parts;
- Stow away your Concrete Block Shape Clamp in a safe and dry place.